



GAI-TRONICS®
A HUBBELL COMPANY

Model 10468-002

Centra-Page System Central Cabinet

Confidentiality Notice

This manual is provided solely as an operational, installation, and maintenance guide and contains sensitive business and technical information that is confidential and proprietary to GAI-Tronics. GAI-Tronics retains all intellectual property and other rights in or to the information contained herein, and such information may only be used in connection with the operation of your GAI-Tronics product or system. This manual may not be disclosed in any form, in whole or in part, directly or indirectly, to any third party.

Introduction

The GAI-Tronics Centra-Page System provides dependable paging and party line communications for rugged and hazardous industrial facilities. It features centrally located electronics providing environmental protection and unitized amplification for easy maintenance.

The Model 10468-002 Central Cabinet, a central component of a Centra-Page System, is designed to house up to three Model 10461-002 Card Racks. A Model 10959-208 Audio Messenger Interface (AMI) and a Model 10961-101 AMI Centra-Page Interface can also be added. Each of the three card racks can support up to 10 line cards, and each line card supports one station. For ease of wiring, the central cabinet offers terminal blocks for power and for remote connection of alarm and interface activation switches.

General Information

The Model 10468-002 Central Cabinet is a double-hinged, three-section, wall-mounted cabinet measuring 20.625 W × 18.5 D × 31 H inches. Use the supplied key to open the lockable front door and expose the front of the center section.

The center section contains the card rack assemblies and has space for an optional Model 10959-208 AMI and a Model 10961-101 AMI Centra-Page Interface. Swing the hinged center section open for easy access to the rear of these components, cable connections, and individual volume adjustments.

See Figure 3 for the dimensions of the cabinet mounting holes located in the rear section. Ensure that the mounting structure selected is sufficient to support the 165 lbs. (74.8 kg) weight of the fully equipped cabinet. The rear section contains the terminal blocks for the individual station field wiring.

The cabinet is designed for input and output cables to enter at the top and bottom of the rear section. The top and bottom each contain six knockouts for cable glands.

Hazardous Areas

The Model 10468-002 Central Cabinet must be mounted in a non-hazardous area, although other portions of the Centra-Page system may be located in Div. I or Div. II hazardous areas if appropriate wiring configurations and barriers are used. Refer to Pub. 42004-356, Control Drawing 72979, for proper installation of stations for intrinsically safe operation in Class I, Div. I, Group C and D hazardous areas.

A typical Centra-Page System with components in both hazardous and non-hazardous areas is shown in Figure 1.

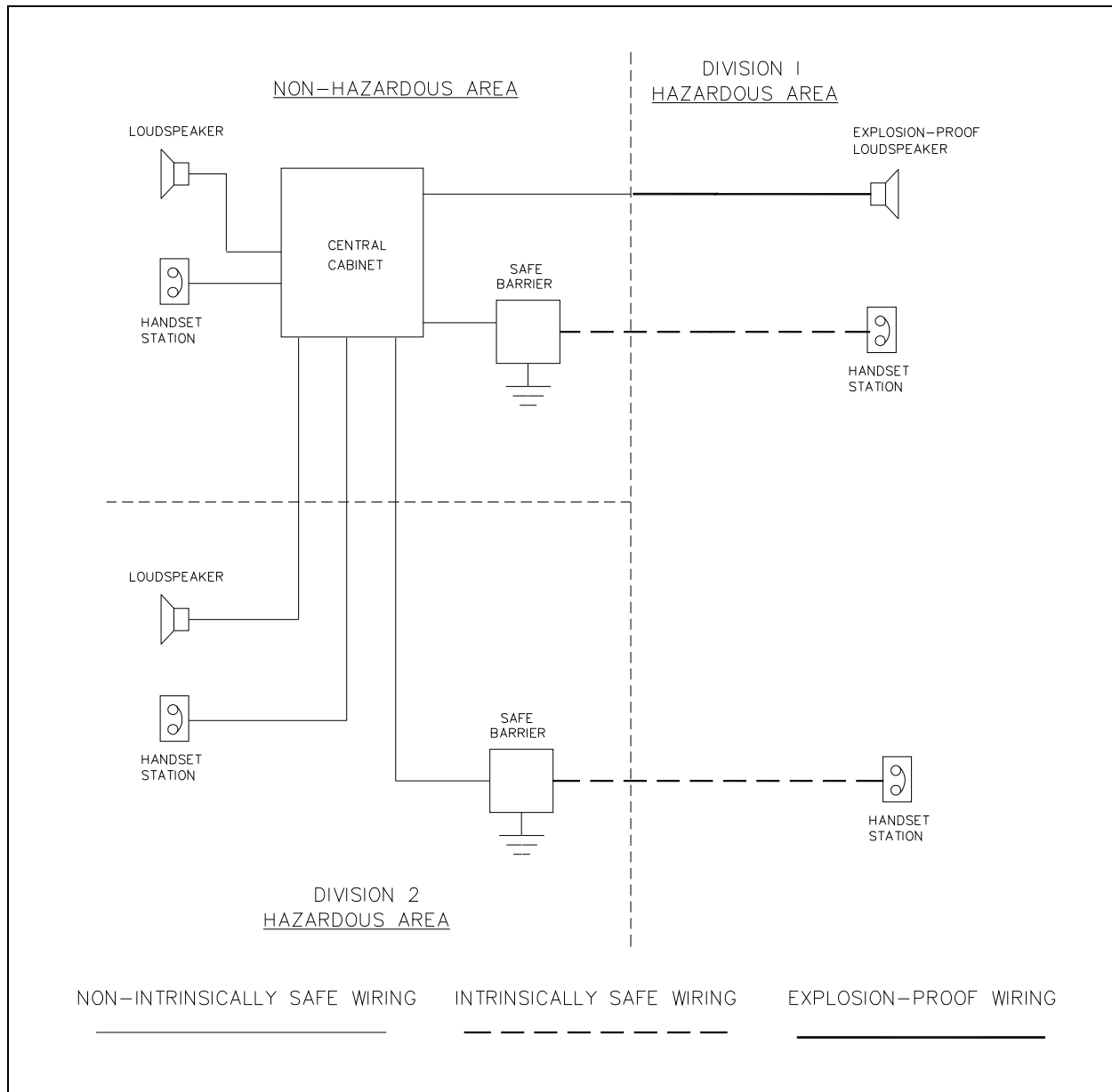


Figure 1. Typical Centra-Page System Diagram

Installation

Install the Model 10468-002 Central Cabinet as follows:

1. Carefully unpack and identify the various components. A parts envelope is included containing screws and washers for mounting cabinet components. Two front door keys are packaged separately.
2. Determine which of cabling knockouts will be used and remove them before mounting the cabinet. Refer to Figure 2.
3. Mount the cabinet to the wall using the mounting holes in the rear section. A fully-equipped cabinet weighs approximately 165 lbs. (74.8 kg) and must be mounted accordingly.

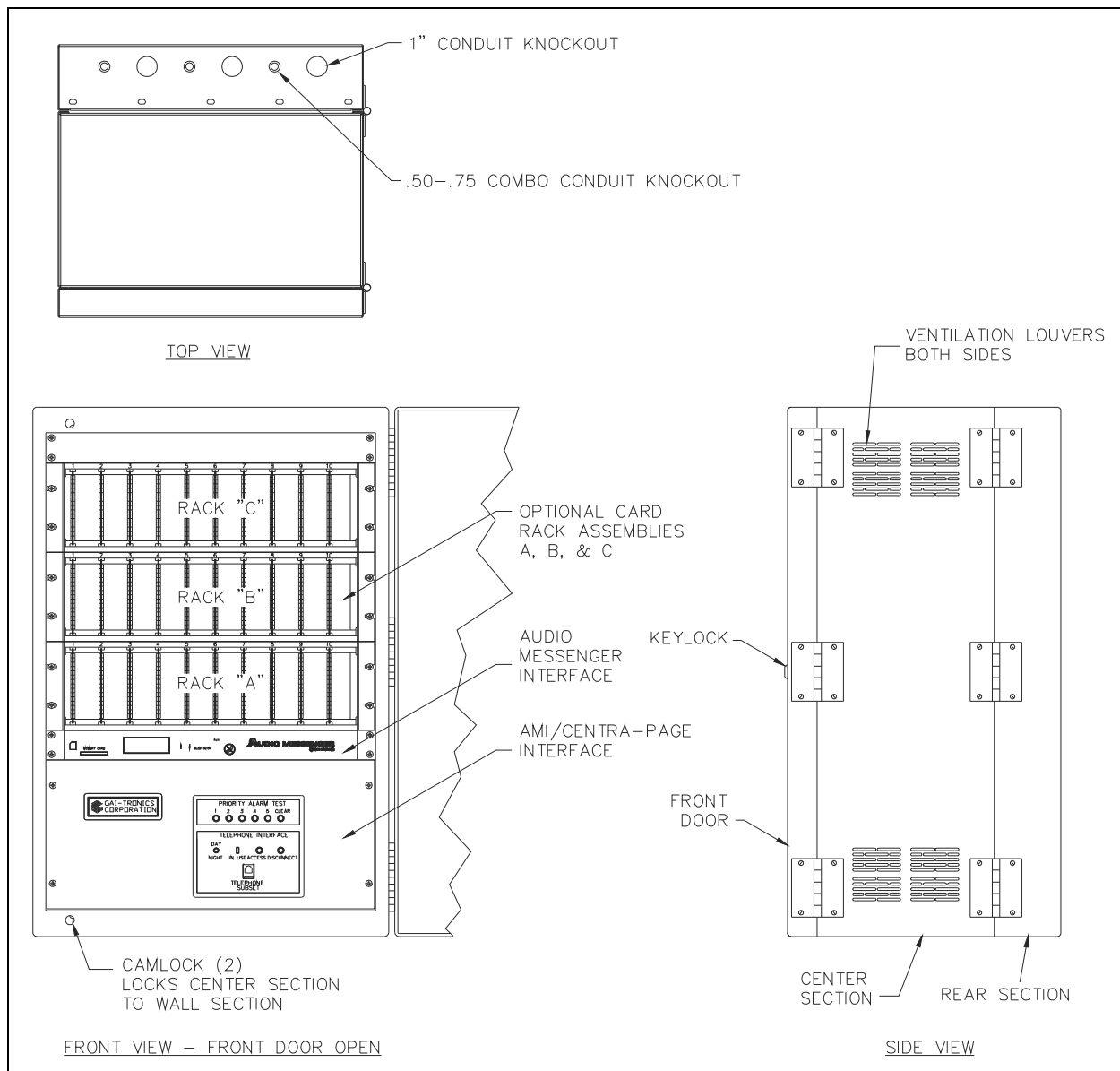


Figure 2. Model 10468-002 Centra-Page Central Cabinet - outline (shown fully-loaded for clarity)

4. The standard cabinet is factory assembled and pre-wired. Wiring for power must be provided to the cabinet, along with any associated loudspeaker and handset stations cables. Bring all field wiring into the terminal blocks in the rear section through the cable knockouts.
5. Connect the individual handset stations (L1, L2, P, A) and the paging speakers (C, 8 ohm, 70 V) to the terminal blocks in the wall-mounted rear section of the Model 10468-002 Central Cabinet. The three rows of ten terminal blocks can support a total of 30 stations. Refer to Figure 4 for an example of the typical terminal block wiring connections.
6. Make the necessary connections to the three terminal blocks located in the rear wall-mounted section of the central cabinet labeled **POWER**, **ALARM**, and **INTERFACE**. Refer to Figure 4 and Figure 5 for the wire color-coding. Their functions are as follows:
 - TB11 (**POWER**) provides connection of the 21 to 28 V dc negative ground power supply (35 amps maximum).
 - TB12 (**ALARM**) is for remotely mounted alarm switches (normally open/momentary contact).
 - TB13 (**INTERFACE**) is for remotely mounted switches (normally open/momentary contact) for telephone access, disconnect, and mode select.

NOTE: If the central cabinet is in a location where the equipment front panels can not be accessed, remote auxiliary switches can be connected to perform the access, disconnect, and mode select functions. Since the currents and voltages are very low, almost any kind of momentary, normally-open switch can be used.

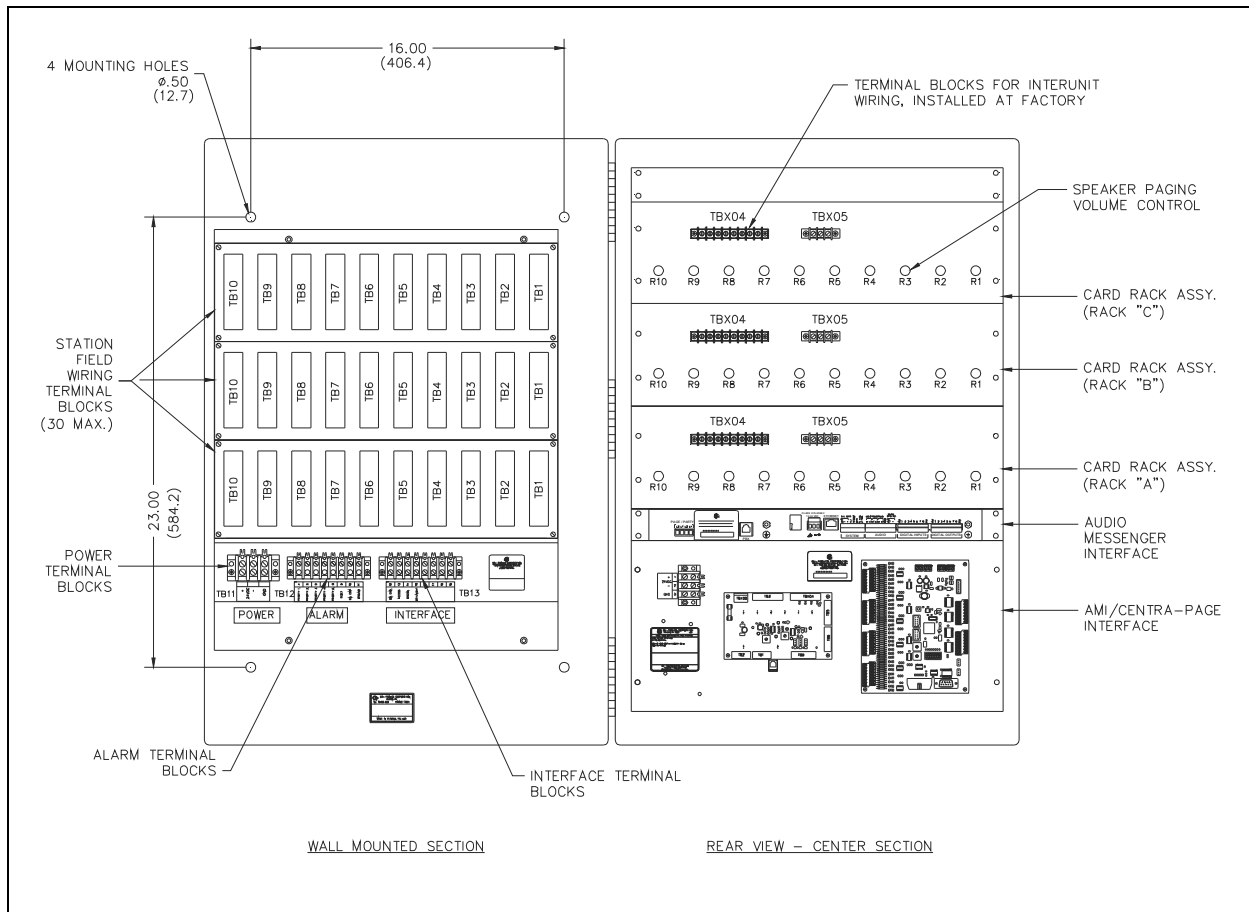


Figure 3. View of the rear section and the rear of center section of central cabinet

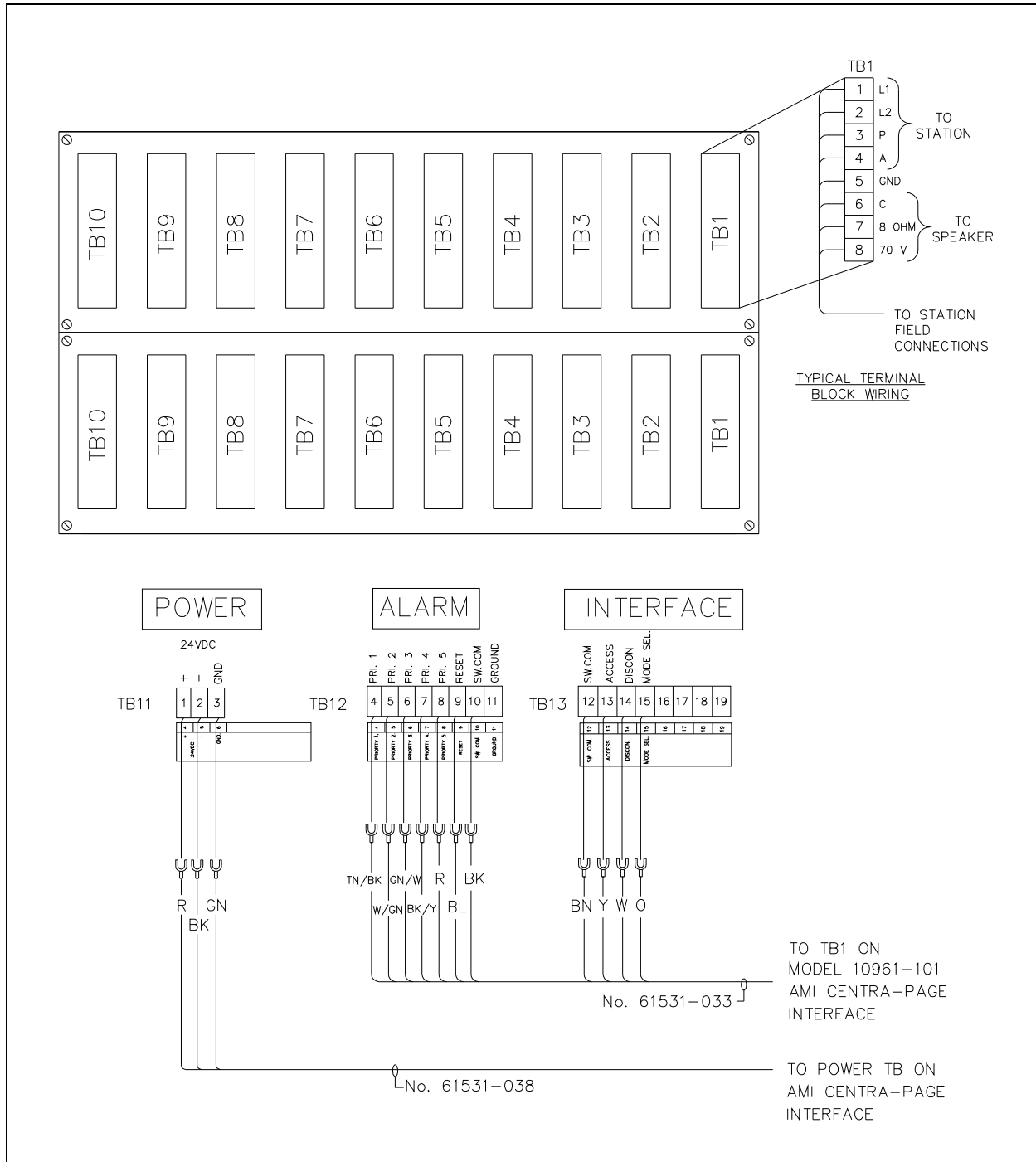


Figure 4. Terminal block connections on the central cabinet's wall-mounted rear section

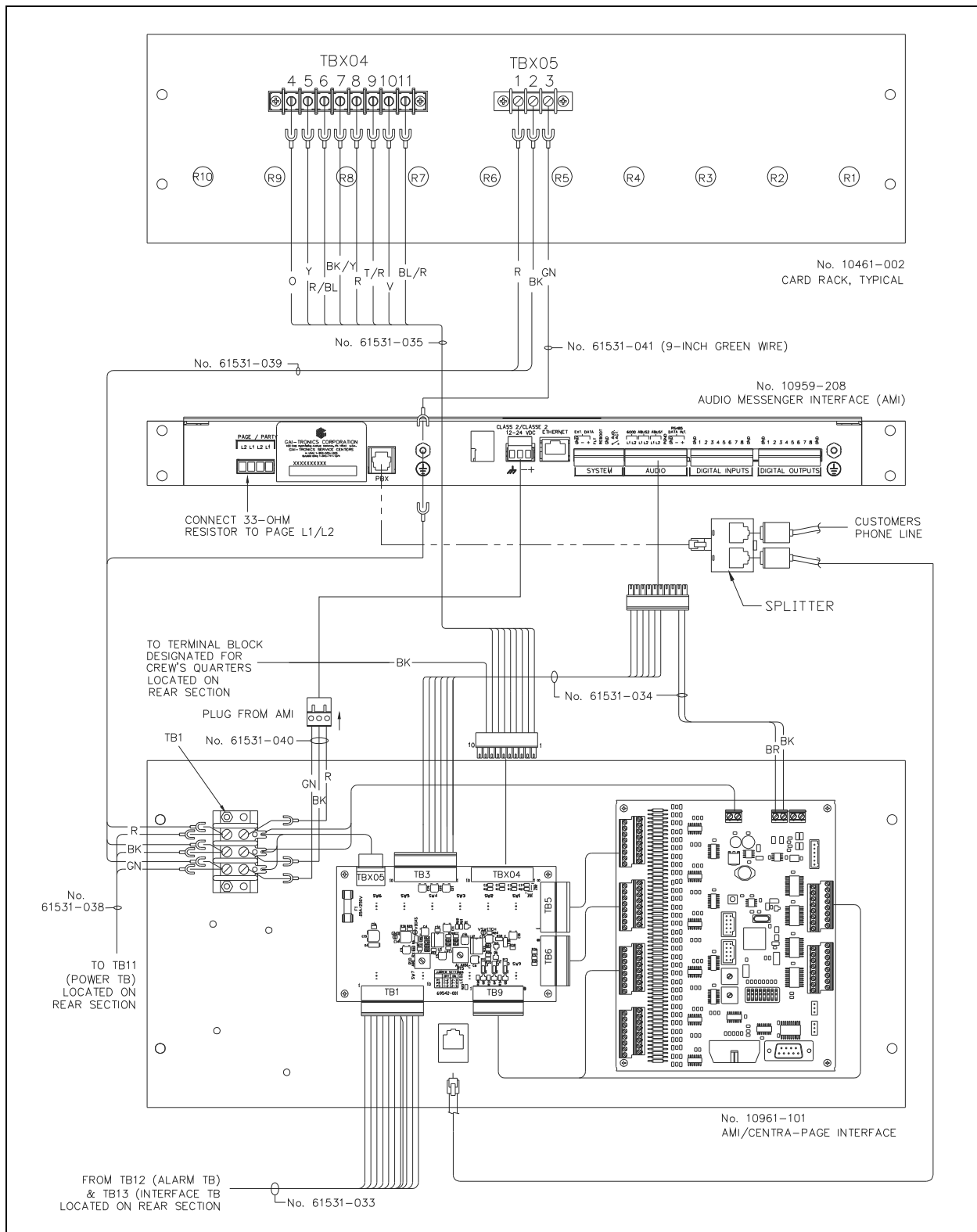


Figure 5. Terminal block connections on the rear of the central cabinet's center section (shown fully-loaded for clarity)

If you are assembling the Centra-Page system in the field, refer to the specific instruction manuals for individual components. These manuals explain in detail how to install and connect the various components of a Centra-Page system to the Model 10468-002 Centra-Page Central Cabinet.

The manuals for these components are listed below:

Pub. Number	Component/Title
42004-214	Model 473-002 Centra-Page Outdoor Wall Station
42004-215	Model 472-002 Centra-Page Permanent Indoor 2-Party Station
42004-216	Model 476-002 Centra-Page Flush-Mount Station
42004-220	Model 10461-002 Centra-Page Card Rack
42004-221	Model 69037-101 Centra-Page Station Card
42004-227	Model C83018 Centra-Page Station Crew's Quarters Muting Card
42004-401	Model 10961-101 AMI Centra-Page Interface
42004-404	Model 10959-208 Rack-Mount Audio Messenger Interface

Operation

The central cabinet itself has no user operation functions. Refer to the individual component manuals for specific operational instructions.

Specifications

Construction..... 16-gauge cold rolled steel with polyurethane enamel finish
 Dimensions 20.625 W × 18.5 D × 31 H inches (523.9 mm × 469.9 mm × 787.4 mm)
 Connections..... All connections are made to terminal blocks
 located on the wall-mounted rear section
 Weight..... 165 lbs. (74.8 kg) approx.
 Power requirements 22–28 V dc negative ground
 35 amps maximum; 3 amps idle
 Operating temperatures -22° F to +140° F (-30° C to +60° C)

Warranty

Equipment. GAI-Tronics warrants for a period of one (1) year from the date of shipment, that any GAI-Tronics equipment supplied hereunder shall be free of defects in material and workmanship, shall comply with the then-current product specifications and product literature, and if applicable, shall be fit for the purpose specified in the agreed-upon quotation or proposal document. If (a) Seller's goods prove to be defective in workmanship and/or material under normal and proper usage, or unfit for the purpose specified and agreed upon, and (b) Buyer's claim is made within the warranty period set forth above, Buyer may return such goods to GAI-Tronics' nearest depot repair facility, freight prepaid, at which time they will be repaired or replaced, at Seller's option, without charge to Buyer. Repair or replacement shall be Buyer's sole and exclusive remedy. The warranty period on any repaired or replacement equipment shall be the greater of the ninety (90) day repair warranty or one (1) year from the date the original equipment was shipped. In no event shall GAI-Tronics warranty obligations with respect to equipment exceed 100% of the total cost of the equipment supplied hereunder. Buyer may also be entitled to the manufacturer's warranty on any third-party goods supplied by GAI-Tronics hereunder. The applicability of any such third-party warranty will be determined by GAI-Tronics.

Services. Any services GAI-Tronics provides hereunder, whether directly or through subcontractors, shall be performed in accordance with the standard of care with which such services are normally provided in the industry. If the services fail to meet the applicable industry standard, GAI-Tronics will re-perform such services at no cost to buyer to correct said deficiency to Company's satisfaction provided any and all issues are identified prior to the demobilization of the Contractor's personnel from the work site. Re-performance of services shall be Buyer's sole and exclusive remedy, and in no event shall GAI-Tronics warranty obligations with respect to services exceed 100% of the total cost of the services provided hereunder.

Warranty Periods. Every claim by Buyer alleging a defect in the goods and/or services provided hereunder shall be deemed waived unless such claim is made in writing within the applicable warranty periods as set forth above. Provided, however, that if the defect complained of is latent and not discoverable within the above warranty periods, every claim arising on account of such latent defect shall be deemed waived unless it is made in writing within a reasonable time after such latent defect is or should have been discovered by Buyer.

Limitations / Exclusions. The warranties herein shall not apply to, and GAI-Tronics shall not be responsible for, any damage to the goods or failure of the services supplied hereunder, to the extent caused by Buyer's neglect, failure to follow operational and maintenance procedures provided with the equipment, or the use of technicians not specifically authorized by GAI-Tronics to maintain or service the equipment. **THE WARRANTIES AND REMEDIES CONTAINED HEREIN ARE IN LIEU OF AND EXCLUDE ALL OTHER WARRANTIES AND REMEDIES, WHETHER EXPRESS OR IMPLIED BY OPERATION OF LAW OR OTHERWISE, INCLUDING ANY WARRANTIES OF MERCHANTABILITY OR FITNESS FOR A PARTICULAR PURPOSE.**

Return Policy

If the equipment requires service, contact your Regional Service Center for a return authorization number (RA#). Equipment should be shipped prepaid to GAI-Tronics with a return authorization number and a purchase order number. If the equipment is under warranty, repairs or a replacement will be made in accordance with the warranty policy set forth above. Please include a written explanation of all defects to assist our technicians in their troubleshooting efforts.

Call 800-492-1212 (inside the USA) or 610-777-1374 (outside the USA) for help identifying the Regional Service Center closest to you.